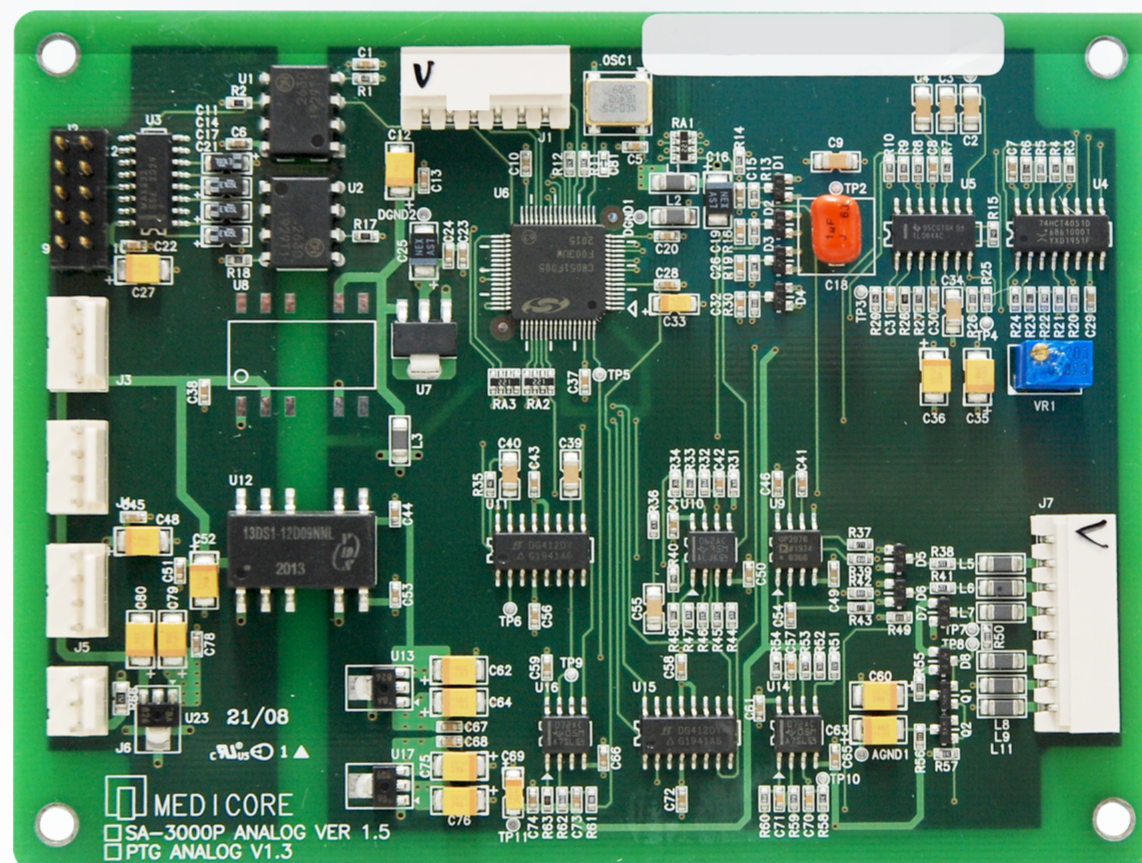


# *Cardiac Autonomic & Cardiovascular Module*



*“Enabling simple integration but valuable diagnostics!”*

# MP-PRO

Software Development Kit for APG & HRV

# Cardiovascular Disorder Testing

We Provide New Paradigm of Non-Invasive Diagnostics in 1 Minute Only!

## ▶ MP-PRO

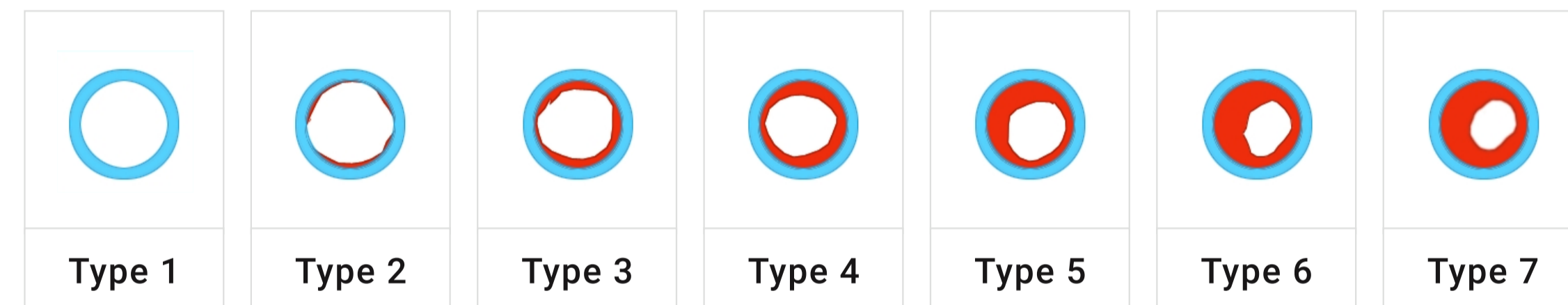
MP-PRO is a very compact module for the cardiovascular disease analysis using APG and autonomic nerve system screening with HRV by simply integrating with other system.

Heart Rate Variability(HRV) is a widely using physiological assessment of cardiac autonomic nervous system by measuring the changes in the cardiac rhythm through time flow.

Accelerated Plethysmography(APG) is a non-invasive technique to measure the amount of blood flow present or passing through the organ or other parts of body.

By measuring the HRV and APG with the finger sensor, it will provide the overall health status with the cardiovascular disorder and mental stress.

## ▶ Type Of Blood Vessel



## ▶ Integrated Application

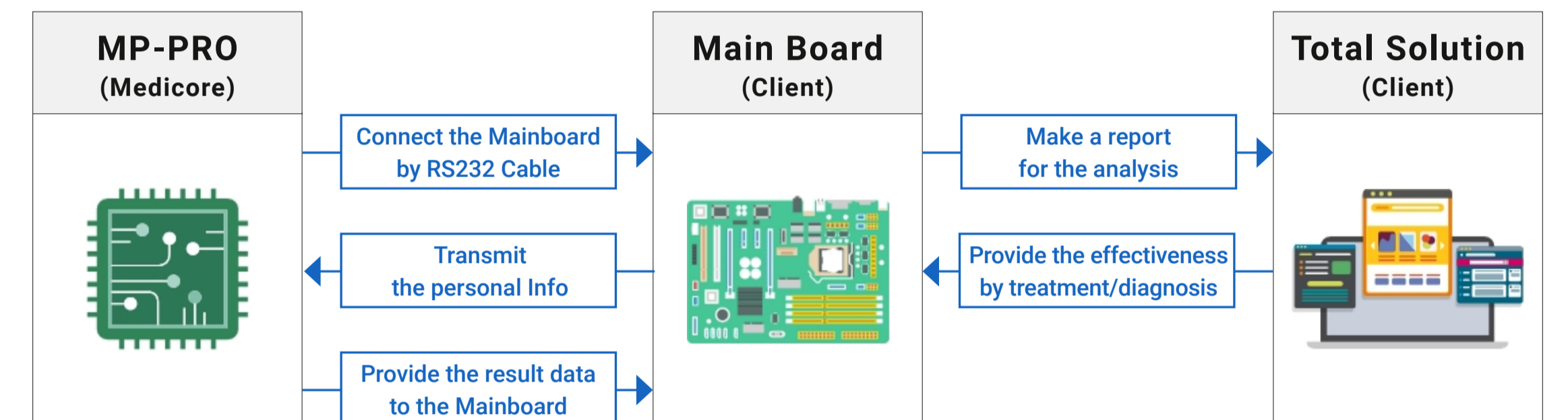


# How to Integrate MP-PRO?

Enable the partners to extend the business and better solution

## ▶ Connect With The Main Board

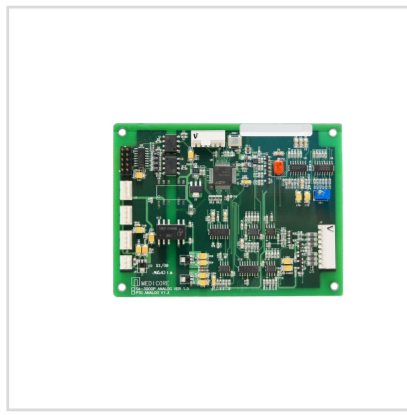
It can be easily and simply integrated to your system and it provides the function of monitoring the customer's health continuously. You will be highly satisfactory to extend your market scale and make it better in competition with others.



## ▶ Sample Of Performing Program

- 1 Personal Information Set-up
- 2 Real Time HR
- 3 Event Log
- 4 HRV & APG Default Parameters : HR, ANS, Fatigue, Stress Index, Arterial/Peripheral Elasticity, Vessel Age, Wave Type
- 5 HRV & APG Additional Parameters : SDNN, RMSSD, PSI, TP, VLF, LF, HF

# Components



PCB Board



Cover Case



PTG Sensor



COM.Cable



Power Cable

# Specification

	Non-Medical	Medical
Operation System	Android	Windows OS
Model	MP-Lite	MP-PRO
Component	Mini One-Board	MP PCB + Memory B/D + AI Algorithm + Sensor
Measurement Time	2' 30"	1' or 2' 30"
Sensor	PPG	PPG / ECG (Optional)
Data Transmission	Heart Rate / Plethysmograph	Heart Rate / Plethysmograph
Result	HRV / APG (8 Parameters)	HRV / APG (34 Parameters)
Protocol	UART	USB

**MEDICORE**

#828, Tower D, 520, Misa-daero, Hanam-si, Gyeonggi-do, Korea  
 TEL : +82-31-8027-7070 E-MAIL : info1@medi-core.com  
 www.medi-core.com

